

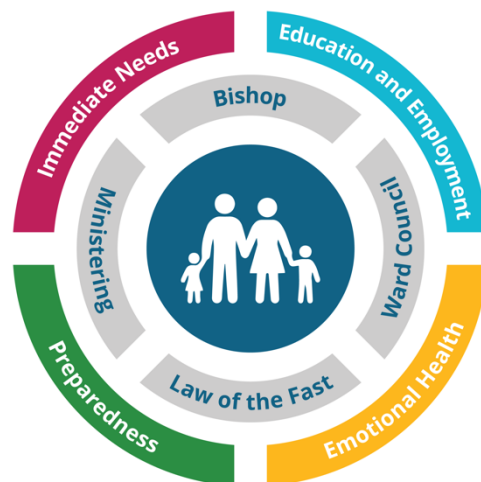
Welfare and Self-Reliance

Products and Services Tool Kit

Through the law of the fast, we can fulfill the two great commandments to love God and to love our neighbors. Local leaders can draw from the Lord’s storehouse as they care for those in need. This storehouse includes community resources, the time and talents of ward members, and resources available through the Church.

Welfare and self-reliance managers (WSRMs) are available to counsel with local leaders to understand the needs, goals, and circumstances of their stakes. They can provide training and support regarding Church and community resources available. When invited, they can help local leaders in a stake self-reliance committee or stake bishops’ welfare council.

Below is an overview of Church resources available, organized by need.



“And if thou draw out thy soul to the hungry, and satisfy the afflicted soul; then shall thy light rise . . . : and the Lord shall guide thee continually.”

—Isaiah 58:10–11

Immediate Needs

Products and Services Available to Help



Basic Needs

- Food, clothing, housing, transportation, health care
- A plan to become self-reliant

- Self-Reliance Plan (form)
- Fast-offering assistance
- Food and commodities provided
- Stake self-reliance centers



Humanitarian

- Refugee and immigrant needs
- Legal services
- Other needs

- Refugee and immigrant support
- Area humanitarian initiatives
- Major humanitarian initiatives
- JustServe (limited availability)



Emergency Response

- Natural disaster
- Famine
- Civil unrest

- Emergency response funding
- Emergency mental health services
- Helping Hands



Financial

- Immediate unemployment
- Sudden or overwhelming debt
- Catastrophic life event

- Stake self-reliance centers
- Fast-offering assistance
- Community resources*

Education and Employment

Products and Services Available to Help



Education

- Learning support
- Planning for a career
- Help paying for school

- BYU-Pathway Worldwide: PathwayConnect
- BYU-Pathway Worldwide: certificates and degrees
- Perpetual Education Fund (in approved countries)
- Benson Scholarship (limited availability)



Literacy

- English language skills

- EnglishConnect 1, 2, 3



Employment

- Unemployment
- Underemployment
- Inadequate income
- Inability to keep a job

- Education for Better Work (self-reliance group)
- Find a Better Job (self-reliance group)
- Starting and Growing My Business (self-reliance group)
- Stake self-reliance centers
- Job training: Deseret Industries, Development Counseling Services (limited availability)

Emotional Health



Emotional and Social Health

- Anxiety and depression
- Suicidal thoughts or attempts
- Marital and parenting difficulties
- Family member support

- Life Help at ChurchofJesusChrist.org
- Family Services leader consultation
- Abuse help line
- Strengthening Marriage; Strengthening the Family (courses)
- Counseling Services (limited availability)



Addiction

- Pornography
- Substance abuse
- Family member support

- Addiction recovery program
- Counseling Services (limited availability)
- Community resources*

Preparedness



Preparing for Emergencies

- Emergency planning
- Family and individual needs (food, finances, and so on)

- Home storage centers (limited availability)
- Personal Finances (self-reliance group)
- VOAD (limited availability)
- Stake, ward, and family emergency plans



Independence and Life Skills

- Missionaries and youth need to plan for the future, build testimony, and gain direction

- Education for Better Work (self-reliance group)
- Find a Better Job (self-reliance group)
- BYU-Pathway Worldwide: PathwayConnect
- EnglishConnect 1, 2, 3
- Counseling Services (limited availability)
- Personal Finances (self-reliance group)



Learn more about each product and service by talking with your WSRM, accessing ChurchofJesusChrist.org, or scanning this QR code.

*Resources vary by location. Contact your WSRM for possible resources.

THE CHURCH OF
JESUS CHRIST
OF LATTER-DAY SAINTS

© 2019 by Intellectual Reserve, Inc. All rights reserved.
Version: 10/19. PD60009991 000.